

ENDURO

1 - 3kVA



Designed with flexibility in mind, it allows you to add up to **4 extra battery modules (EBM)** to extend runtime, ensuring continuous operation during prolonged power outages.

Featuring **Double Online Conversion technology**, it offers the highest level of protection against power disturbances, ensuring clean, uninterrupted power for sensitive equipment. For more extended run times, **long-run units** are also available, making the Enduro Series a robust choice for businesses requiring extended backup power.



SCAN / CLICK
FOR MORE DETAILS

RUNTIMES



Online Double
Conversion



Rack/Tower
Mount



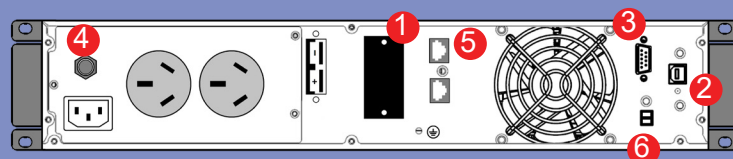
SNMP/Relay
Option

	200VA 180W	400VA 360W	600VA 540W	800VA 720W	1000VA 900W	1200VA 1080W	1500VA 1350W	2000VA 1800W	3000VA 2700W
EN1000	52mins	25mins	15mins	12mins	8mins				
EN1000 + 1xEBM 1	2hr 36mins	1hr 15mins	45mins	36mins	24mins				
EN1000 + 2xEBM 1	4hr 20mins	2hr 40mins	1hr 15mins	1hr	40mins				
EN1000 + 3xEBM 1	6hr 4mins	3hr 40mins	1hr 45mins	1hr 24mins	56mins				
EN1000 + 4xEBM 1	7hr 48mins	4hr 30mins	2hr 15mins	1hr 48mins	1hr 12mins				
EN2000	1hr 58mins	58mins	38mins	24mins	20mins	16mins	12mins	7mins	
EN2000 + 1xEBM 2	5hr 54mins	2hr 54mins	2hr	1hr 12mins	1hr	53mins	47mins	34mins	
EN2000 + 2xEBM 2	9hr 50mins	4hr 50mins	3hr 20mins	2hr 30mins	1hr 40mins	1hr 34mins	1hr 23mins	1hr 1min	
EN2000 + 3xEBM 2	13hr 46mins	6hr 46mins	4hr 40mins	2hr 48mins	2hr 20mins	2hr 15mins	1hr 59mins	1hr 28mins	
EN2000 + 4xEBM 2	17hr 42mins	8hr 42mins	6hr	4hr 50mins	3hr 53mins	3hr 7mins	2hr 35mins	1hr 55mins	
EN3000	1hr 56mins	56mins	38mins	22mins	19mins	15mins	11mins	7mins	4mins
EN3000 + 1xEBM 3	5hr 51mins	2hr 50mins	1hr 57mins	1hr 10mins	58mins	51mins	45mins	33mins	12mins
EN3000 + 2xEBM 3	9hr 44mins	4hr 45mins	3hr 14mins	1hr 43mins	1hr 36mins	1hr 33mins	1hr 19mins	58mins	20mins
EN3000 + 3xEBM 3	13hr 38mins	6hr 37mins	4hr 32mins	2hr 40mins	2hr 15mins	2hr 11mins	1hr 57mins	1hr 26mins	28mins
EN3000 + 4xEBM 3	17hr 32mins	8hr 32mins	5hr 51mins	4hr 55mins	3hr 49mins	3hr 4mins	2hr 28mins	1hr 50mins	36mins

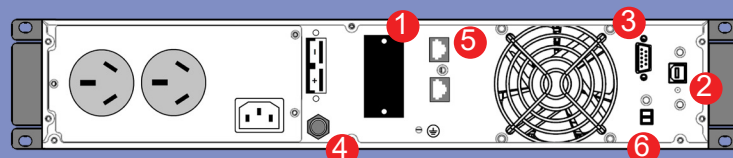
Rear Panel

- 1 - Intelligent slot (SNMP card, dry contact etc.)
- 2 - USB port
- 3 - RS-232 port
- 4 - Input breaker
- 5 - RJ45 surge protection
- 6 - EPO

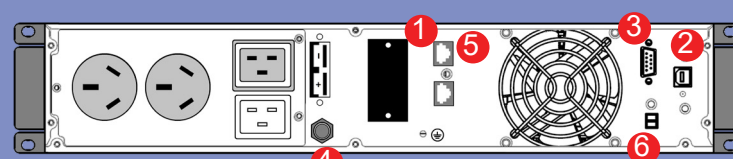
1 kVA



2 kVA



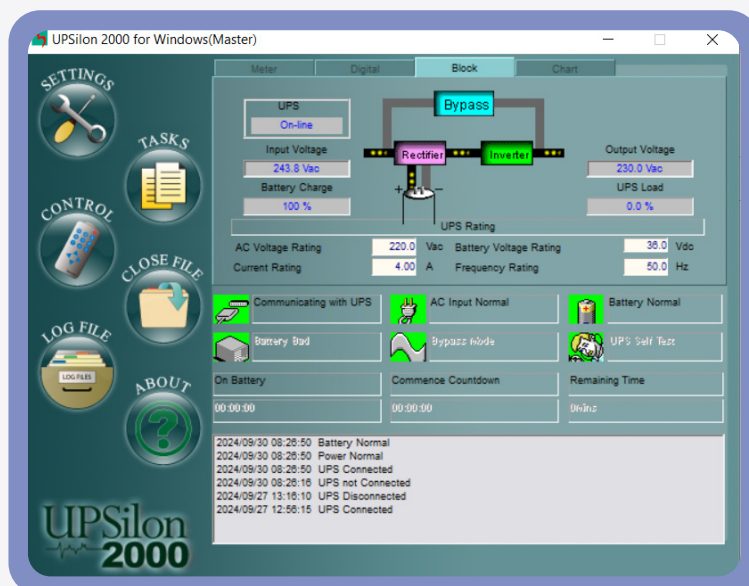
3 kVA



UPSilon Software

All units include UPSILON software as a standard.

- ✓ USB connected for monitoring, notifying and logging parameter.
- ✓ SMS or Email alerts for power failure, battery life.



Accessories

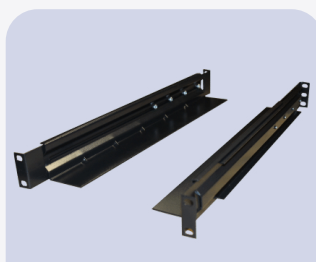
Communication Accessories



SW006
SNMP card for
ENDURO series III
1-10kVA



SW011
Relay card for
ENDURO Series III
1-3kVA



RK1000
L Rail - telescopic rail
for rack mounting
UPS (490-720mm)



PSS9LL/LLB9
Long life batteries -
10-year design life
battery upgrade

Model	EN1000	EN2000	EN3000
Capacity	1000VA/900W	2000VA/1800W	3000VA/2700W
Display	LED and LCD		
Input			
Input Voltage	184 - 276V		
Input Powerfactor	≥ 0.98		
Input Plug	Aus standard 10Amp		15Amp
Short Circuit	Resettable Fuse		
Output			
Voltage regulation	230V +/-2% User settable		
Output sockets	2 x AUS 10A 1 x IEC 15A		3 x AUS 10A 1 x IEC 15A
Output Powerfactor	0.9		
Frequency	50Hz +/- 0.1Hz		
Waveform	Pure Sine Wave		
Transfer time	0 Seconds		
Battery			
Type	Sealed Lead Acid		
Standard Configuration	3 x 9AH	6 x 9AH	6 x 9AH
EBM Configuration	1 x EBM =6 x 9AH	1 x EBM =12 x 9AH	1 x EBM =12 x 9AH
Recharge Time	6 - 8 hours to 90%		
Communications and management			
Communication	USB and RS-232 standard		
Display Indication	Load, battery, input, output, operating		
Software Supplied	UPSilon		
DC start / Cold Start	YES		
Auto restart	YES		
Protection			
Surge protection	2200 Joules / 60,000 Amps		
Short circuit	Reasetable Fuse		
Efficiency	≥ 89-92% Normal mode, up to 97% ECO Mode		
Safety Regulations	IEEE 587		
EMC Standards	EN50091-2, C Tick/RCM		
Environment			
Audible noise	<30dB at 1m	<35dB at 1m	
Temperature operating range	0 - 40 Degrees		
Humidity	0 - 95% (non-condensing)		
Physical			
Dimensions (HxWxD) / Weight	87 (2RU) x 440 x 430/ 15.1kg	87 (2RU) x 440 x 595 / 26.3kg	87 (2RU) x 440 x 595 / 26.8kg
Ventilation Requirements	100mm clearence front and rear		
Accessories Supplies	Feet, Rack ears & 1 x 10A Input cable		Feet, Rack ears & 1 x 15A Input cable